



# Quick Start Guide

Smart Wi-Fi Light Strip,  
Multicolor

©2024 TP-Link 7106511543 REV1.1.0

\*Images may differ from actual products.

## Set Up Your Light Strip

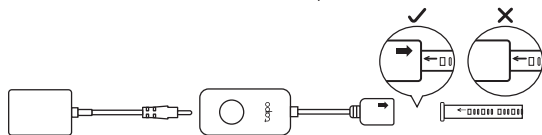
### STEP 1 DOWNLOAD APP

Get the **Tapo** app from the App Store or Google Play, and log in.



### STEP 2 CONNECT HARDWARE

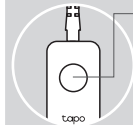
Connect all the parts. When connecting the light strip to the controller, make sure the arrows point at each other.



### STEP 3 SET UP

Tap the **+** button in the app, choose **Lights**, and select your model. Follow the instructions in the Tapo app to complete the setup.

### Button Explanations



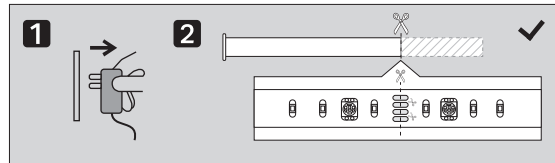
#### Control Button

- Press **once** to turn on/off your light strip
- Press **twice** to switch preset lighting effects
- Press and hold for **5s**, then release to reset only Wi-Fi settings
- Press and hold for **10s** to restore factory settings

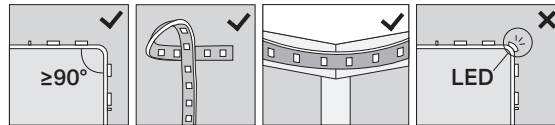
## Installation Tips

To avoid damaging your light strip, note the following tips.

1. Only cut the exceeded length along the cutting lines of the light strip after **unplugging** the light strip.



2. Avoid any sharp corners or turns behind the LED beads.



## Install Your Light Strip

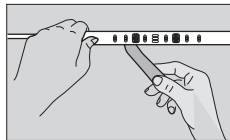
1. Choose a location that avoids static and eases away from splashing water. Find a clean, dry and smooth surface, then wipe off the dust.



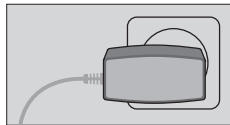
2. Slowly peel away the 3M adhesive backing and take it out bit by bit.



3. Stick the light strip and press it down for 10-15 seconds. Secure the controller with the adhesive pads. Do not move it to other place after it is attached.



4. Plug in the power adapter to power on your light strip.



## Safety Notice

- NOT FOR EMERGENCY LIGHTING
- CAUTION: To reduce the risk of fire, electric shock, or injury to persons.
- Not intended for recessed installation in ceilings, or soffits.
- Only use the control provided with or specified by these instructions to control this device.
- To prevent fire danger, do not run cord behind walls, ceilings, soffits, or cabinets where it may be inaccessible for examination.
- Use only insulated staples or plastic ties to secure cords.
- The maximum distance to the receptacle is determined by the length of adapter cord.
- Keep the device away from water, fire, humidity or hot environments.
- Do not attempt to disassemble, repair, or modify the device. If you need service, please contact us.
- Do not use the device where wireless devices are not allowed.
- Do not use damaged charger or USB cable to charge the device.
- Do not use any other chargers than those recommended.
- Adapter shall be installed near the equipment and shall be easily

accessible.

- Route and secure cords so that they will not be pinched or damaged when the cabinet is pushed to the wall;
- Position the portable cabinet light with respect to the cabinet so the lamp replacement markings are able to be read during replacing;
- The National Electrical Code (NEC) does not permit cords to be concealed where damage to insulation may go unnoticed. To prevent fire danger, do not run cord behind walls, ceilings, soffits, or cabinets where it may be inaccessible for examination. Cords should be visually examined periodically and immediately replaced when any damage is noted.



For technical support, the user guide, warranty and more, please visit <https://www.tapo.com/support/>.